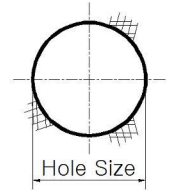
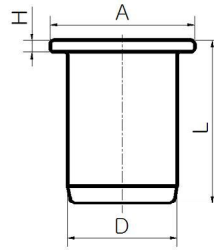




BLIND NUT (Flat Head)



MATERIAL
Steel / Stainless Steel

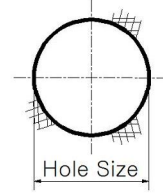
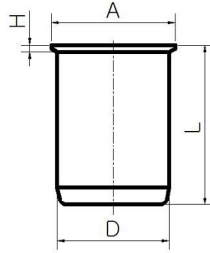
Dimension Data

Mandrel size	×	Grip range	Grip range		Hole size	PART NAME	D	Dimension		
			MIN	MAX				L	A	H
M4	×	0.7	0.5	2.5	6.1	BEM4 / BEM4K	6	10.5	9	0.8
M5	×	0.8	0.5	2.5	7.1	BEM5 / BEM5K	7	11.5	10	1.0
M6	×	1.0	1.0	3.5	9.1	BEM6 / BEM6K	9	14.5	13	1.5
M8	×	1.25	1.0	4.0	11.1	BEM8 / BEM8K	11	16.5	14.5	1.5
M10	×	1.5	1.0	4.0	13.1	BEM10	13	20	16	1.6

Dimension in millimeters



BLIND NUT (Countersunk Head)



MATERIAL
Steel / Stainless Steel

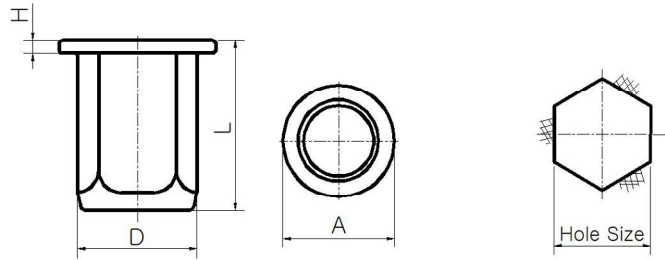
Dimension Data

Mandrel size	×	Grip range	Grip range		Hole size	PART NAME	D	Dimension		H
			MIN	MAX				L	A	
M4	×	0.7	0.5	2.5	6.1	SEM4 / SEM4K	6	10	7	
M5	×	0.8	0.5	2.5	7.1	SEM5 / SEM5K	7	12	8	
M6	×	1.0	1.0	4.0	9.1	SEM6 / SEM6K	9	15	10	0.5
M8	×	1.25	1.0	4.0	11.1	SEM8 / SEM8K	11	16	12	
M10	×	1.5	1.0	4.0	13.1	SEM10	13	18.6	14	

Dimension in millimeters



BLIND NUT (Full Hexagon With Big Flange)



MATERIAL
Steel / Stainless Steel

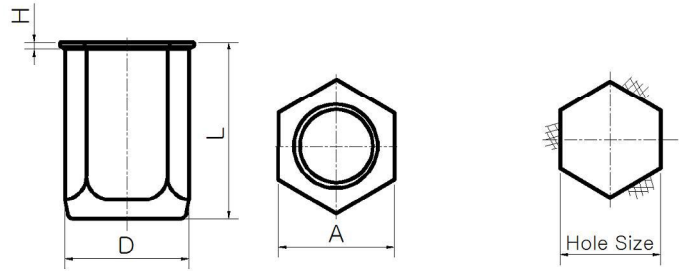
Dimension Data

Mandrel size	Grip range	MIN	MAX	Hole size	PART NAME	Dimension			
						D	L	A	H
M4 × 0.7	0.5	2.5	6.1	FHBM4	5.9	10.7	9	0.9	
M5 × 0.8	0.5	3.0	7.1	FHBM5	6.9	13.7	10	0.9	
M6 × 1.0	0.5	3.3	9.1	FHBM6	8.9	16	13	1.5	
M8 × 1.25	0.5	3.3	11.1	FHBM8	10.9	18	16	1.5	
M10 × 1.5	0.5	3.5	13.1	FHBM10	12.9	21	19	2	

Dimension in millimeters



BLIND NUT (Full Hexagon With Small Flange)



MATERIAL
Steel / Stainless Steel

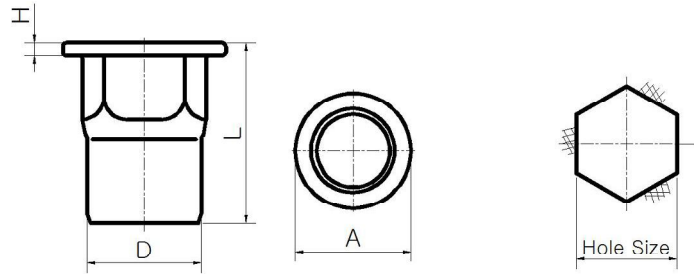
Dimension Data

Mandrel size	Grip range	MIN	MAX	Hole size	PART NAME	Dimension			
						D	L	A	H
M4 × 0.7	0.5	2.5	6.1	FHSM4	5.9	10.2	6.9	0.5	
M5 × 0.8	0.5	3.0	7.1	FHSM5	6.9	12	7.8	0.5	
M6 × 1.0	0.5	3.3	9.1	FHSM6	8.9	15.2	10	0.5	
M8 × 1.25	0.5	3.3	11.1	FHSM8	10.9	17.8	12	0.6	
M10 × 1.5	0.5	3.5	13.1	FHSM10	12.9	21	14.6	0.8	

Dimension in millimeters



BLIND NUT (Half Hexagon With Big Flange)



MATERIAL
Steel / Stainless Steel

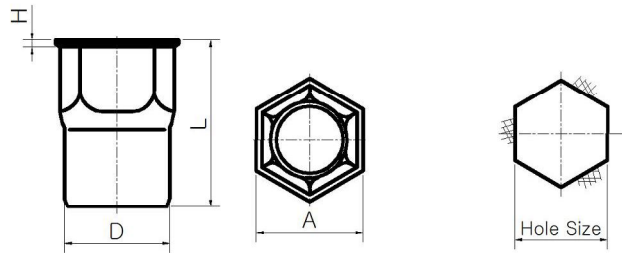
Dimension Data

Mandrel size	Grip range	MIN	MAX	Hole size	PART NAME	Dimension				
						D	L	A	H	
M4	×	0.7	0.5	2.5	6.1	HBM4	5.9	10.7	9	0.9
M5	×	0.8	0.5	3.0	7.1	HBM5	6.9	13.7	10	0.9
M6	×	1.0	0.5	3.3	9.1	HBM6	8.9	16.0	13	1.5
M8	×	1.25	0.5	3.3	11.1	HBM8	10.9	18	16	1.5
M10	×	1.5	0.5	3.5	13.1	HBM10	12.9	21	19	2

Dimension in millimeters



BLIND NUT (Half Hexagon With Small Flange)



MATERIAL
Steel / Stainless Steel

Dimension Data

Mandrel size	Grip range	MIN	MAX	Hole size	PART NAME	Dimension			
						D	L	A	H
M4 × 0.7	0.5	2.0	6.1	HSM4	5.9	10.4	7	0.4	
M5 × 0.8	0.5	3.0	7.1	HSM5	6.9	11.8	8.12	0.6	
M6 × 1.0	0.5	3.0	9.1	HSM6	8.9	14.6	9.87	0.6	
M8 × 1.25	0.5	3.5	11.0	HSM8	10.9	16	12.05	0.6	

Dimension in millimeters