



SPEED RIVET



Specification		
Size(Dia)	3.2, 4.0, 4.8	mm
Material	Aluminum, Steel, Brass and Stainless Steel	
Head types	Dome and Countersunk	
Finish	Aluminum	Natural & Anodized Black
	Steel	Zinc Chromated & Chromated Black
	Brass	Brightened & Tin Plated
	Stainless	Natural & Colored Black
Color	painted colored head is available on request	

Features and Benefit

Our speed rivet has a Bulbed tail. And it is foreshortened and expanded radially during installation.

because this Bulbed tail will give you high vibration resistance and good hole fill.

We supply the speed rivet with many different material and finishes.

So you will have various options according to your needs.

Speed rivets are packed in a paper pod. So you can install 20 to 70 rivets with one easy loading.

Front jaws, Mandrel and M/F Spring selection guide

						RIVET SIZE	FRONT JAW														
							(1)	(2)	(3)	(4)	(5)	(6)									
Flat (1)		recessed (2)		Flat (3)		recessed (4)		Flat (5)		recessed (6)		Ø2.4	○	○	N/A	N/A	N/A	N/A			
STANDARD		LONG				LONG COVERED		Ø3.2	○	○	○	○	○	○	○	○	○	○			
Ø2.4		Brass, Aluminum		1.83	standard	HM-0183															
Ø3.2		Brass, Aluminum		1.93	#1 over	HM-0193	HS-3001		N/A		N/A										
				2.01	#2 over	HM-0201															
Ø3.2		Brass, Aluminum		2.34	standard	HM-0234															
				2.46	#1 over	HM-0246	HS-4001		HM-0234L												
				2.59	#2 over	HM-0259															
				2.49	standard	HM-S249	HS-4001		HM-0246L												
Ø4.0		Brass, Aluminum		2.79	standard	HM-0279															
				2.92	#1 over	HM-0292	HS-5001		HM-0259L												
Ø4.8		Brass, Aluminum		3.05	#2 over	HM-0305															
				3.18	standard	HM-S305	HS-5001		HM-0279L												
				3.58	standard	HM-0358															
				3.71	#1 over	HM-0371	HS-6001		HM-0292L												
Ø4.8		Stainless Steel		3.84	#2 over	HM-0384															
				3.89	standard	HM-S389	HS-6001		HM-0305L												
				4.01	#1 over	HM-S401															

Depend on the hole size and material of application, you can select suitable mandrel for your application.

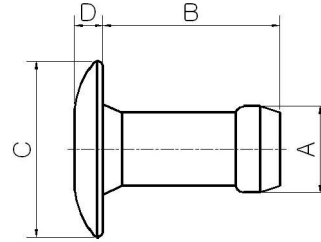
For the curved front jaws, the mandrels have to be bent by hand to match the curvature of the front jaws.

Mandrels for stainless steel speed rivet, they have a 'V' cut on the end of the mandrel heads



SPEED RIVET

DOMED HEAD, ALUMINUM ALLOY



MATERIAL
Aluminum alloy [A5056]

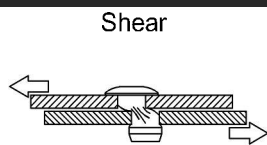
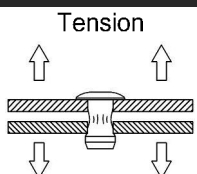
FINISH
Polished & Lubricated (anodized black is available on request)

Dimension Data

Fastener size	Grip range		Hole size		PART NAME	Dimension				
	MIN	MAX	MIN	MAX		A MAX	B MAX	C MIN MAX		D MAX
Ø2.4	1.20	2.40			BD3040		4.0			
	2.20	3.40			BD3050		5.0			
	3.20	4.40			BD3060		6.0			
	4.20	5.40	2.36	2.44	BD3070	2.35	7.0	3.8	4.2	0.9
	5.20	6.40			BD3080		8.0			
	6.20	7.50			BD3090		9.0			
Ø3.2	1.20	2.40			BD4043		4.3			
	2.20	3.40			BD4053		5.3			
	3.20	4.40			BD4063		6.3			
	4.20	5.40	3.26	3.34	BD4073	3.15	7.3	5.9	6.4	1.0
	5.20	6.40			BD4083		8.3			
	6.20	7.50			BD4093		9.3			
Ø4.0	1.60	2.90			BD5049		4.9			
	2.20	3.40			BD5054		5.4			
	2.70	3.90			BD5059		5.9			
	3.70	4.90	3.97	4.04	BD5069	3.90	6.9	7.5	8.0	1.0
	4.70	5.90			BD5079		7.9			
	5.70	6.90			BD5089		8.9			
Ø4.8	1.70	3.30			BD6054		5.4			
	2.10	3.90			BD6061		6.1			
	3.70	5.20			BD6073		7.3			
	5.00	6.40	4.85	4.93	BD6086	4.77	8.6	9.0	9.6	1.2
	6.30	7.70			BD6099		9.9			
	7.50	9.00			BD6111		11.1			

Dimension in millimeters

Performance Data - typical value

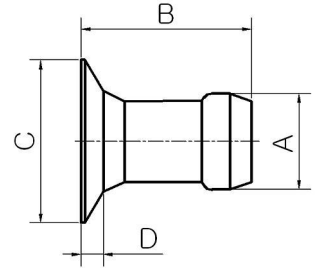
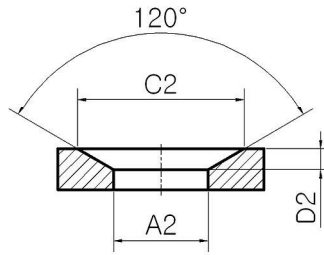


Fastener size	Tension	Shear
Ø2.4	400 N	250 N
Ø3.2	1160 N	670 N
Ø4.0	1620 N	1090 N
Ø4.8	2250 N	1490 N



SPEED RIVET

COUNTERSUNK HEAD, ALUMINUM ALLOY



MATERIAL
Aluminum alloy [A5056]

FINISH
Polished & Lubricated (anodized black is available on request)

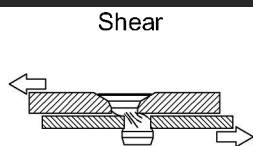
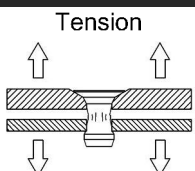
Dimension Data

Fastener size	Grip range		Hole size				PART NAME	Dimension				
	min	max	D2		A2			A MAX	B MAX	C		D MAX
			MIN	MAX	MIN	MAX				MIN	MAX	
Ø3.2	1.6	2.7					BF4048		4.8			
	2.6	3.8					BF4058		5.8			
	3.6	4.8	0.81	0.90	3.26	3.34	BF4068	3.15	6.8	5.1	5.9	0.89
	4.6	5.8					BF4078		7.8			
	5.6	6.8					BF4088		8.8			
Ø4.0	1.6	2.9					BF5052		5.2			
	2.2	3.4					BF5057		5.7			
	2.7	3.9	1.04	1.07	3.97	4.04	BF5062	3.9	6.2	6.1	6.9	1.02
	3.7	4.9					BF5072		7.2			
	4.7	5.9					BF5082		8.2			
	5.7	6.9					BF5092		9.2			

Dia 4.0mm is available on request

Dimension in millimeters

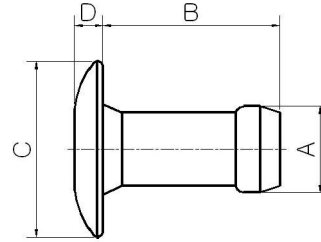
Performance Data - typical value



Fastener size	Tension	Shear
Ø3.2	1160 N	670 N
Ø4.0	1620 N	1090 N



SPEED RIVET DOMED HEAD, STEEL



MATERIAL
Low carbon steel

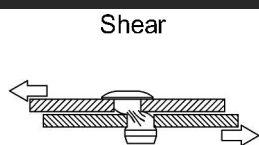
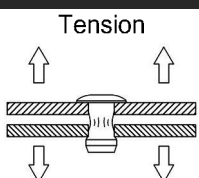
FINISH
Zinc plated Cr³⁺ (Black colored rivet is available on request)

Dimension Data

Fastener size	Grip range		Hole size		PART NAME	Dimension				
	MIN	MAX	MIN	MAX		A MAX	B MAX	C MIN MAX		D MAX
Ø3.2	1.00	1.90			ID4038		3.8			
	1.20	2.40			ID4043		4.3			
	2.20	3.40			ID4053		5.3			
	3.20	4.40	3.26	3.34	ID4063	3.15	6.3	5.9	6.4	1.0
	4.20	5.40			ID4073		7.3			
	5.20	6.40			ID4083		8.3			
	6.20	7.50			ID4093		9.3			
Ø4.0	1.60	2.90			ID5049		4.9			
	2.20	3.40			ID5054		5.4			
	2.70	3.90			ID5059		5.9			
	3.70	4.90	3.97	4.04	ID5069	3.90	6.9	7.5	8.0	1.0
	4.70	5.90			ID5079		7.9			
	5.70	6.90			ID5089		8.9			
Ø4.8	1.70	3.30			ID6054		5.4			
	2.10	3.90			ID6061		6.1			
	3.70	5.20			ID6073		7.3			
	5.00	6.40	4.85	4.93	ID6086	4.77	8.6	9.0	9.6	1.25
	6.30	7.70			ID6099		9.9			
	7.50	9.00			ID6111		11.1			

Dimension in millimeters

Performance Data - typical value

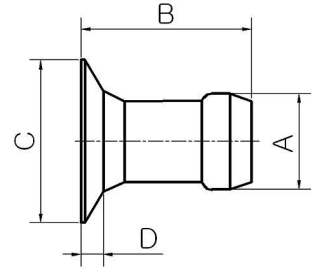
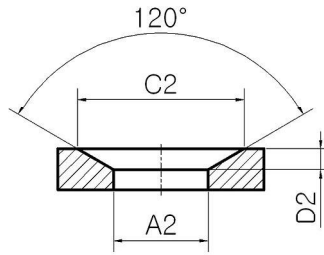


Fastener size	Tension	Shear
Ø3.2	1500 N	900 N
Ø4.0	2800 N	1600 N
Ø4.8	3700 N	2200 N



SPEED RIVET

COUNTERSUNK HEAD, STEEL



MATERIAL
Low carbon steel

FINISH
Zinc plated Cr³⁺ (Chromated Black is available on request)

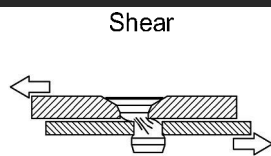
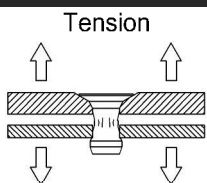
Dimension Data

Fastener size	Grip range		Hole size				PART NAME	Dimension				
	min	max	D2		A2			A MAX	B MAX	C		D MAX
			MIN	MAX	MIN	MAX				MIN	MAX	
Ø3.2	1.5	1.7	0.70	0.79			IF4042		4.2			0.69
	1.3	2.3	0.75	0.79			IF4043		4.3			0.74
	1.6	2.7					IF4048		4.8			
	2.6	3.8			3.26	3.34	IF4058	3.16	5.8	5.1	5.8	
	3.6	4.8	0.78	0.81			IF4068		6.8			0.76
	4.6	5.8					IF4078		7.8			
	5.6	6.8					IF4088		8.8			
Ø4.0	1.6	2.9					IF5052		5.2			
	2.2	3.4					IF5057		5.7			
	2.7	3.9					IF5062		6.2			
	3.7	4.9	1.04	1.07	3.97	4.04	IF5072	3.9	7.2	6.1	7.0	1.02
	4.7	5.9					IF5082		8.2			
	5.7	6.9					IF5092		9.2			

Dia 4.0mm is available on request

Dimension in millimeters

Performance Data - typical value



Fastener size

Ø3.2
Ø4.0

Tension

1500 N
2800 N

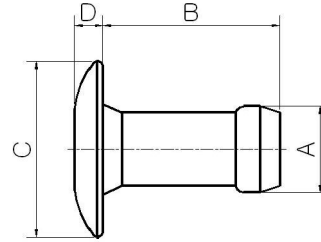
Shear

900 N
1600 N



SPEED RIVET

DOMED HEAD, BRASS



MATERIAL

Brass

FINISH

Brightened / Electro tin plated

Dimension Data

Fastener size	Grip range		Hole size		PART NAME	Dimension				
	MIN	MAX	MIN	MAX		A MAX	B MAX	C MIN MAX		D MAX
Ø2.4	1.20	2.40			CD3040		4.0			
	2.20	3.40			CD3050		5.0			
	3.20	4.40			CD3060		6.0			
	4.20	5.40	2.36	2.44	CD3070	2.35	7.0	3.8	4.2	0.9
	5.20	6.40			CD3080		8.0			
	6.20	7.50			CD3090		9.0			
	Ø3.2	1.20	2.40			CD4043		4.3		
2.20		3.40			CD4053		5.3			
3.20		4.40			CD4063		6.3			
4.20		5.40	3.26	3.34	CD4073	3.15	7.3	5.9	6.4	1.0
5.20		6.40			CD4083		8.3			
6.20		7.50			CD4093		9.3			

Dimension in millimeters

The part number of Tin plated rivet has additional code 'TP' at the end of above part number

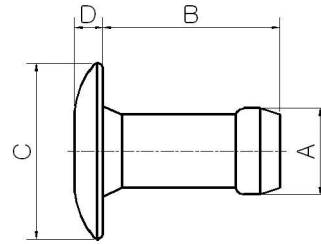
Performance Data - typical value

Tension	Shear	Fastener size	Tension	Shear
		Ø2.4	800 N	400 N
		Ø3.2	1900 N	1100 N



SPEED RIVET

DOMED HEAD, STAINLESS STEEL



MATERIAL
Stainless steel

FINISH
Natural polished (Black colored rivet is available on request)

Dimension Data

Fastener size	Grip range		Hole size		PART NAME	Dimension				
	MIN	MAX	MIN	MAX		A MAX	B MAX	C MIN MAX		D MAX
Ø3.2	1.2	2.4			SD4043		4.3			
	2.2	3.4			SD4053		5.3			
	3.2	4.4	3.27	3.34	SD4063	3.15	6.3	5.8	6.4	1.0
	4.2	5.4			SD4073		7.3			
	5.2	6.4			SD4083		8.3			
Ø4.0	1.6	2.9			SD5049		4.9			
	2.2	3.4			SD5054		5.4			
	2.7	3.9	3.97	4.04	SD5059	3.90	5.9	7.5	8.0	1.15
	3.7	4.9			SD5069		6.9			
	4.7	5.9			SD5079		7.9			
	5.7	6.9			SD5089		8.9			
Ø4.8	1.7	3.3			SD6054		5.4			
	2.1	3.9			SD6061		6.1			
	3.7	5.2	4.85	4.93	SD6073	4.77	7.3	9.0	9.6	1.3
	5.0	6.4			SD6086		8.6			
	6.3	7.7			SD6099		9.9			
	7.5	9.0			SD6111		11.1			

Dimension in millimeters

Performance Data - typical value

Tension	Shear	Fastener size	Tension	Shear
		Ø3.2	2000 N	1300 N
		Ø4.0	3500 N	2400 N
		Ø4.8	5100 N	3500 N



SPEED CHOVET

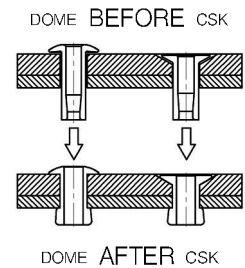
Specification		
Size(Dia)	3.2, 4.0, 4.8	mm
Material	Aluminum, Steel, and Brass	
Head types	Dome and Countersunk	
Finish	Aluminum	Natural & Anodized Black
	Steel	Zinc Chromated & Chromated Black
	Brass	Brightened & Tin Plated



Features and Benefit

Our speed chovets have internally tapered bore. And it is expanded radially during installation, because this internally tapered bore will provide minimum stress to soft or brittle host materials.

Our speed chovet provides high shear and controlled clamp. it is ideal for soft and brittle materials. Speed chovets are podded in a paper pod. So you can install 20 to 70 rivets with one easy loading.



Front jaws, Mandrel and M/F Spring selection guide

RIVET SIZE	FRONT JAW					
	(1)	(2)	(3)	(4)	(5)	(6)
Ø2.4	○	○	N/A	N/A	N/A	N/A
Ø3.2	○	○	○	○	○	○
Ø4.0	○	○	○	○	○	○
Ø4.8	○	○	○	○	○	○

Flat (1)	recessed (2)	Flat (3)	recessed (4)	Flat (5)	recessed (6)
STANDARD		LONG		LONG COVERED	

Fastener size	Mandrel Dia	Description	Front Jaw type			
			Standard		Long and Long covered	
			Mandrel	M/F spring	Mandrel	M/F spring
Ø2.4	Brass, Aluminum	standard	HCM-0184	HS-3001	N/A	N/A
		#1 over	HCM-0188			
		#2 over	HCM-0193			
Ø3.2	Brass, Aluminum	standard	HCM-0224	HS-4001	HCM-0224L	HS-4001L
		#1 over	HCM-0234			
		#2 over	HCM-0249			
Ø4.0	Brass, Aluminum	standard	HCM-0272	HS-5001	HCM-0272L	HS-5001L
		#1 over	HCM-0292			
		#2 over	HCM-0310			
Ø4.8	Brass, Aluminum	standard	HCM-0335	HS-6001	HCM-0335L	HS-6001L
		#1 over	HCM-0371			
		#2 over	HCM-0396			

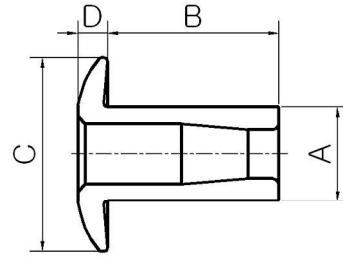
Depend on the hole size and material of application, you can select suitable mandrel for your application.

For the curved front jaws, the mandrels have to be bend by hand to match the curvature of the front jaws.



SPEED CHOVET

DOMED HEAD, ALUMINUM ALLOY



MATERIAL
Aluminum alloy [A5052]

FINISH
Polished & Lubricated (anodized black is available on request)

Dimension Data

Fastener size	Grip range		Hole size		PART NAME	Dimension				
	MIN	MAX	MIN	MAX		A MAX	B MAX	C MIN MAX		D MAX
Ø2.4	0.00	1.50			CBD3032		3.2			
	1.60	3.10			CBD3048		4.8			
	3.20	4.70			CBD3064	2.48	6.4	3.8	4.2	0.9
	4.80	6.30	2.49	2.55	CBD3079		7.9			
	6.40	7.90			CBD3095		9.5			
	8.00	9.50			CBD3111		11.1			
Ø3.2	0.00	1.50			CBD4032		3.2			
	1.60	3.10			CBD4048		4.8			
	3.20	4.70			CBD4064	3.26	6.4	4.9	5.5	1.2
	4.80	6.30	3.28	3.34	CBD4079		7.9			
	6.40	7.90			CBD4095		9.5			
	8.00	9.50			CBD4111		11.1			
Ø4.0	1.60	3.10			CBD5048		4.8			
	3.20	4.70			CBD5064		6.4			
	4.80	6.30			CBD5079	4.04	7.9	5.9	6.5	1.5
	6.40	7.90	4.09	4.16	CBD5095		9.5			
	8.00	9.50			CBD5111		11.1			
Ø4.8	1.60	3.10			CBD6056		5.6			
	3.20	4.70			CBD6072		7.2			
	4.80	6.30			CBD6088	4.85	8.8	8.3	8.9	1.8
	6.40	7.90	4.85	4.93	CBD6103		10.3			
	8.00	9.50			CBD6119		11.9			

Dimension in millimeters

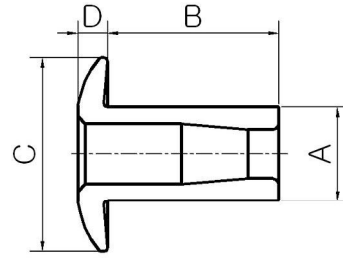
Performance Data - typical value

Shear	Fastener size	Shear
	Ø2.4	300 N
	Ø3.2	600 N
	Ø4.0	1000 N
	Ø4.8	1500 N



SPEED CHOVET

DOMED HEAD, STEEL



MATERIAL
Low carbon steel

FINISH
Zinc plated Cr³⁺ (Black colored rivet is available on request)

Dimension Data

Fastener size	Grip range		Hole size		PART NAME	Dimension				
	MIN	MAX	MIN	MAX		A MAX	B MAX	C MIN MAX		D MAX
Ø3.2	0.00	1.50			CID4032		3.2			
	1.60	3.10			CID4048		4.8			
	3.20	4.70	3.28	3.34	CID4064	3.26	6.4	4.9	5.5	1.2
	4.80	6.30			CID4079		7.9			
	6.40	7.90			CID4095		9.5			
	8.00	9.50			CID4111		11.1			
Ø4.0	1.60	3.10			CID5048		4.8			
	3.20	4.70			CID5064		6.4			
	4.80	6.30	4.09	4.16	CID5079	4.04	7.9	5.9	6.5	1.5
	6.40	7.90			CID5095		9.5			
	8.00	9.50			CID5111		11.1			
	Ø4.8	1.60	3.10			CID6056		5.6		
3.20		4.70			CID6072		7.2			
4.80		6.30	4.85	4.93	CID6088	4.85	8.8	8.3	8.9	1.8
6.40		7.90			CID6103		10.3			
8.00		9.50			CID6119		11.9			

Dimension in millimeters

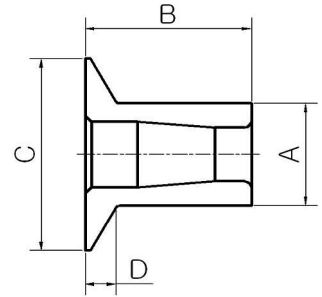
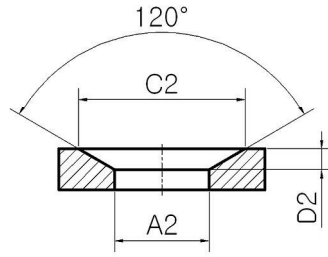
Performance Data - typical value

Shear	Fastener size	Shear
	Ø3.2	1400 N
	Ø4.0	2400 N
	Ø4.8	3200 N



SPEED CHOVET

COUNTERSUNK HEAD, STEEL



MATERIAL
Low carbon steel

FINISH
Zinc plated Cr³⁺ (Black colored rivet is available on request)

Dimension Data

Fastener size	Grip range		Hole size				PART NAME	Dimension				
	MIN	MAX	D2		A2			A	B	C		D
			MIN	MAX	MIN	MAX	MAX	MAX	MIN	MAX	MAX	
Ø3.2	1.00	1.50						3.3				
	1.00	2.30						4.1				
	1.60	3.10						4.9				
	3.20	4.70	0.91	1.00	3.28	3.34	3.26	6.5	5.2	5.8	0.9	
	4.80	6.30						8.1				
	6.40	7.90						9.7				
Ø4.0	1.60	3.10						4.9				
	3.20	4.70						6.5				
	4.80	6.30						8.1				
	6.40	7.90	1.01	1.10	4.09	4.16	4.04	9.7	6.2	6.8	1.0	
	8.00	9.50						11.2				
Ø4.8	1.60	3.10						5.7				
	3.20	4.70						7.3				
	4.80	6.30						8.9				
	6.40	7.90	1.41	1.50	4.85	4.93	4.85	10.5	8.6	9.2	1.4	
	8.00	9.50						12.0				

Dimension in millimeters

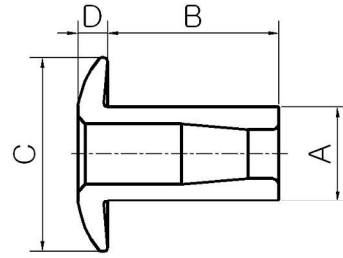
Performance Data - typical value

Shear	Fastener size	Shear
	Ø3.2	1400 N
	Ø4.0	2400 N
	Ø4.8	3200 N



SPEED CHOVET

DOMED HEAD, BRASS



MATERIAL
Brass

FINISH
Brightened / Electro tin plated

Dimension Data

Fastener size	Grip range		Hole size		PART NAME	Dimension			
	MIN	MAX	MIN	MAX		A MAX	B MAX	C MIN	D MAX
Ø2.4	0.00	1.50			CCD3032		3.2		
	1.60	3.10			CCD3048	2.48	4.8	3.8	4.2
	3.20	4.70	2.49	2.55	CCD3064		6.4		0.9
	4.80	6.30			CCD3079		7.9		
Ø3.2	0.00	1.50			CCD4032		3.2		
	1.60	3.10			CCD4048	3.26	4.8	4.9	5.5
	3.20	4.70	3.28	3.34	CCD4064		6.4		1.2
	4.80	6.30			CCD4079		7.9		
Ø4.0	1.60	3.10			CCD5048		4.8		
	3.20	4.70			CCD5064		6.4		
	4.80	6.30	4.09	4.16	CCD5079	4.04	7.9	5.9	6.5
	6.40	7.90			CCD5095		9.5		
	8.00	9.50			CCD5111		11.1		
Ø4.8	1.60	3.10			CCD6056		5.6		
	3.20	4.70			CCD6072		7.2		
	4.80	6.30	4.85	4.93	CCD6088	4.85	8.8	8.3	8.9
	6.40	7.90			CCD6103		10.3		
	8.00	9.50			CCD6119		11.9		

Dimension in millimeters

The part number of Tin plated rivet has additional code 'TP' at the end of above part number

Performance Data - typical value

Shear	Fastener size	Shear
	Ø2.4	800 N
	Ø3.2	1300 N
	Ø4.0	2300 N
	Ø4.8	3100 N



SPEED SCREW

Specification		
Size(Dia)	3.0, 3.5	mm
Material	Steel	
Head types	Dome	
Finish	Zinc plated and Yellow passivated	



Features and Benefit

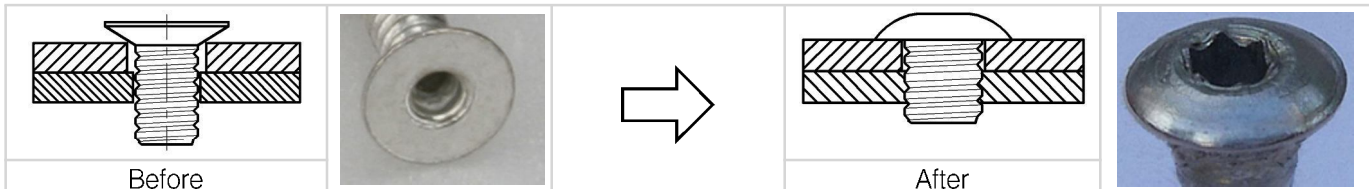
Speed screw combines benefit of rivet and screw for Plastic Applications.
 They are installed from one side of the workpiece with hexagon Mandrel.
 The Hexagon Mandrel expands radially during installation, and forming a thread in the host material.
 The rear sheet must be thicker than 1.62mm
 The hardness of host material should not be exceed 105Hv5

	<p>NOTE</p> <p>Minimum rear sheet thickness required for removability The hardness of host material should not be exceed 105Hv5</p>
--	---

Applications

Aluminum die-cast boxex
 polycarbonate,plastic
 PCB's to chassis assemblies.

Placing Sequence



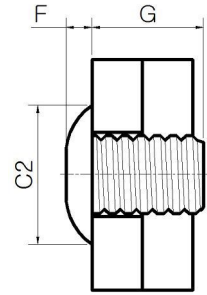
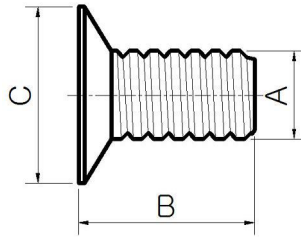
During the installation,

1. The headtype changes from countersunk into dome type.
2. The threaded body makes counter thread on the host material They will provide high clinch and secure clamp up



SPEED SCREW

STEEL



MATERIAL
Low carbon steel

FINISH
Zinc plated & Yellow passivated

Dimension Data

Fastener size	Grip range		Hole size				PART NAME	Dimension						
	REAR SHEET -MIN-	TOTAL THICKNESS -MAX-	FRONT		REAR			A	B	C		F	G	
HEXAGON KEY			MIN	MAX	MIN	MAX	MAX	MAX	MIN	MAX	MAX	MAX	MAX	
Ø3.0 1/16"	1.62	2.85					SC3006	5.2					4.0	
	1.62	3.85					SC3007	6.1					5.0	
	1.62	4.83					SC3009	7.1					6.0	
	1.62	5.82	3.07	3.15	2.28	2.89	SC3010	2.8	8.1	5.4	5.9	6.2	1.4	7.0
	1.62	6.81					SC3011	9.1						8.0
	1.62	7.80					SC3012	10.1						9.0
	1.62	10.72					SC3016	13.1						11.9
Ø3.5 2mm	1.62	2.85					SC3506	5.2					4.0	
	1.62	3.85					SC3507	6.1					5.0	
	1.62	4.83					SC3509	7.1					6.0	
	1.62	5.82	3.50	3.58	3.10	3.17	SC3510	3.1	8.1	5.6	6.0	6.2	1.4	7.0
	1.62	6.81					SC3511	9.1						8.0
	1.62	7.80					SC3512	10.1						9.0
	1.62	11.76					SC3517	14.1						11.9

Dimension in millimeters

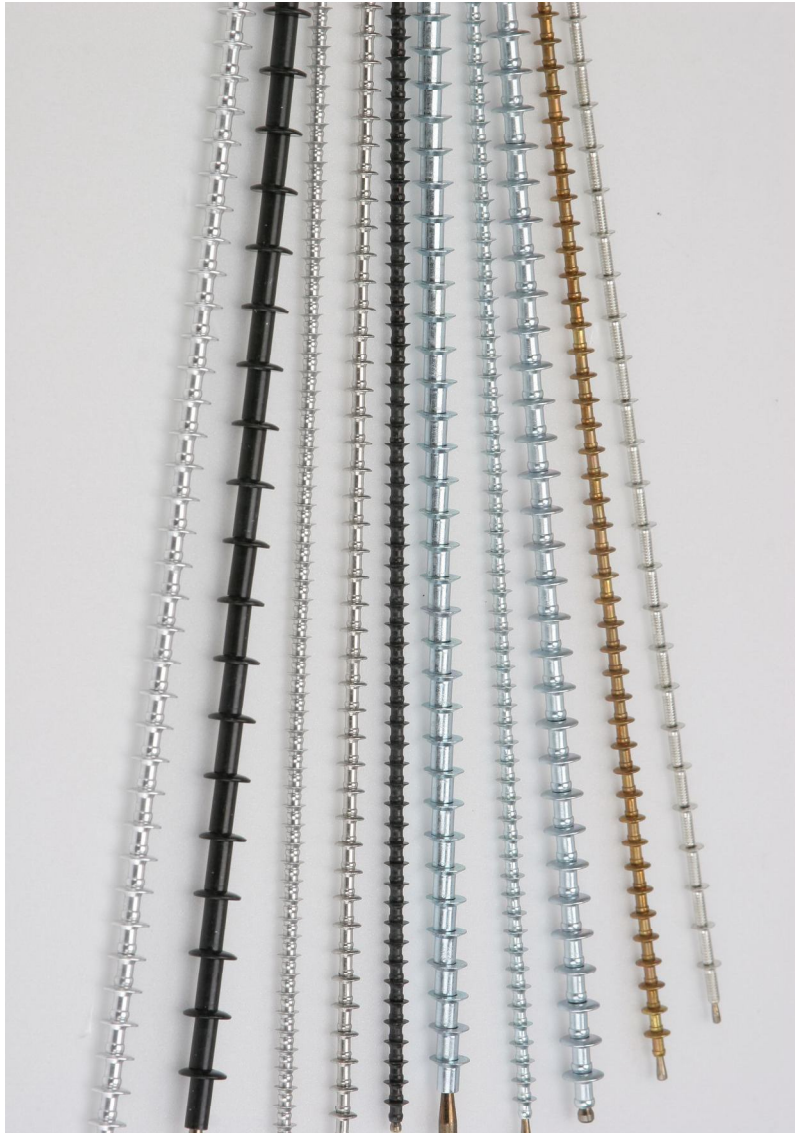
Hot tin dipped finishes are available on request

Speed screw can be reused with an Hexagon key

Speed screw need rear sheet thickness for removability and it should be thicker than 1.62mm

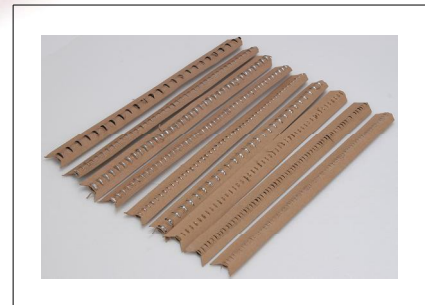
Performance Data - typical value

TORQUE TO UNSCREW	Tension	Shear	Fastener size	TORQUE	Tension	Shear
			Ø3.0	0.3 Nm	800 N	900 N
			Ø3.5	0.6 Nm	1000 N	1000 N





HAND TOOL (HB-0300) – For Speed Rivet Type



SPECIAL FEATURE

Blind sided assembly
 Ideal for areas with restricted access
 Lightweight

Fast, single action trigger
 High capacity magazine
 Rugged construction
 Durable construction

SPECIFICATION

Air Supply pressure	MIN 5 bar / MAX 7 bar	
Free Air Volume Required	5.1 bar	2.6 liter
Stroke	MIN 30mm	
Pull force	5.5 bar	3.89 Kn
Cycle Time	Approximately	1 second
Noise Level	Less than	70 db(a)
Weight	1.08 Kg	
Overall length	442mm	
Vibration	Less than	2.7m/s ²
Overall length	475mm	
Intensification Ratio	30:1	