



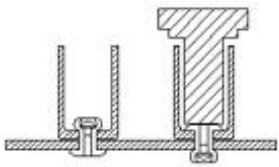
OPENVET STANDARD BLIND RIVET

SPECIFICATION		
SIZE (mm)	3.2, 4.0, 4.8	
MATERIAL	ALUMINUM, STEEL, STAINLESS STEEL	
HEAD TYPES	DOME AND COUNTERSUNK	
FINISH	ALUMINUM	NATURAL, ANODIZED BLACK
	STEEL	ZINC CHROMATED, CHROMATED BLACK
	STAINLESS STEEL	NATURE, COLORED BLACK
	COLOR	PAINTED COLOR BODY IS AVAILABLE ON REQUEST



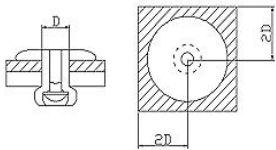
DESIGN GUIDE

CHANNEL FASTENING



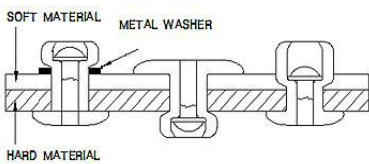
THE CHANNEL MATERIAL SHOULD BE PLACED ON BLIND SIDE
 USE LONG NOSE ASSEMBLY, IN THIS CASE, YOU REQUIRED TO USE
 THE MAXIMUM LENGTH OF CHANNEL IS 20mm

EDGE FASTENING



WHEN YOU NEED TO INSTALL THE RIVET ON THE CONNER OF SHEET.
 THE DISTANCE FROM THE CENTER OF HOLE TO HE EDGE SHOULD BE
 TWICE THE RIVET DIA "D"

SOFT MATERIAL FASTENING



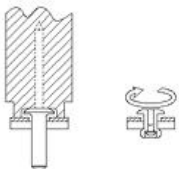
USE METAL WASHER ON SOFT MATERIAL.
 USE LARGE FLANGE RIVET.
 PLACE THE SOFT MATERIAL AT FRONT SIDE.

THIN AND WIDE HOLE FASTENING



PLACE THIN SHEET OR WIDE HOLE MATERIAL ON FRONT SIDE.
 MAKE TIGHT HOLE ON THE THIN SHEET.

PIVOT FASTENING

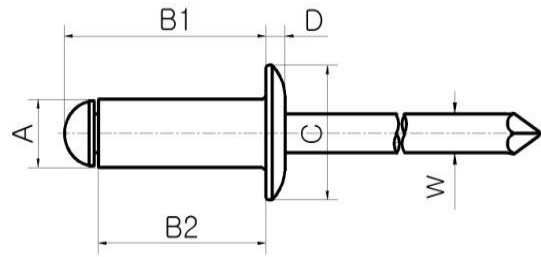


IF YOU WANT TO HAVE A ROTATING SHEET AFTER INSTALATION.
 USE SPECIAL NOSEPIECE TO PROVIDE A SMALL GAP BETWEEN
 THE RIVET AND THE ROTATEING SHEET
 THE ROTATING SHEET SHOULD BE ALWAYS PLACED ON THE FRONT SIDE



OPENVET

DOMED HEAD, ALUMINUM ALLOY



MATERIAL

BODY : A5056

MANDREL : STEEL

FINISH

BODY : POLISHED

MANDREL : ZINC

DIMENSION DATA

FASTENER SIZE	GRIP RANGE		HOLE SIZE		PART NAME	DIMENSION							
	MIN	MAX	MIN	MAX		A MIN MAX	B1 MAX	B2 MAX	C MIN MAX	D ±0.2	W MAX		
Ø 2.4	1.0	3.2	3.3	3.4	HAD 32S	2.3	2.5	8.5	6	4.6	5	0.9	1.5
	3.2	6.4			HAD 34S			11.8	9				
Ø 3.2	1.6	3.2	3.3	3.4	HAD 42S			8.6	6.4	6.2	6.6	1.1	1.9
	3.2	4.8			HAD 43S			10.2	8.0				
	4.8	6.4			HAD 44S	3.1	3.3	11.7	9.5				
	6.4	8.0			HAD 45S			13.4	11.2				
	8.0	9.6			HAD 46S			14.9	12.7				
	9.6	12.8			HAD 48S			18.1	15.9				
Ø 4.0	1.6	3.2	4.1	4.3	HAD 52S			9.9	7.0	7.8	8.2	1.4	2.3
	3.2	4.8			HAD 53S			11.5	8.6				
	4.8	6.4			HAD 54S	3.9	4.1	13.1	10.2				
	6.4	9.6			HAD 56S			16.2	13.3				
	9.6	12.8			HAD 58S			19.4	16.5				
Ø 4.8	1.6	3.2	4.9	5.2	HAD 62S			10.7	7.6	9.3	9.9	1.6	2.9
	3.2	4.8			HAD 63S			12.3	9.2				
	4.8	6.4			HAD 64S	4.7	4.9	13.9	10.8				
	6.4	9.6			HAD 66S			17.1	14.0				
	9.6	12.8			HAD 68S			20.3	17.2				
	12.8	16.0			HAD 610S			23.4	20.3				

DIMENSION IN MILIMERTERS

PERFORMANCE DATA

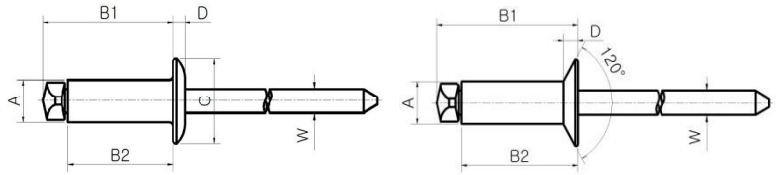
TAPICAL VALUE

TENSION	SHEAR	FASTENER SIZE (Ø)	TENSION (N)	SHEAR (N)
		2.4	710	470
		3.2	1360	910
		4.0	2110	1390
		4.8	3120	2140



OPENVET

DOMED HEAD, STEEL



MATERIAL

BODY : STEEL

MANDREL : STEEL

FINISH

BODY : ZINC

MANDREL : ZINC

DIMENSION DATA

FASTENER SIZE	GRIP RANGE		HOLE SIZE		PART NAME	DIMENSION								
	MIN	MAX	MIN	MAX		A MIN	A MAX	B1 MAX	B2 MAX	C MIN	C MAX	D ±0.2	W MAX	
Ø 3.2	1.6	-	3.2		HSD(F) 42S			8.6	6.4					
	3.2	-	4.8		HSD(F) 43S			10.2	8.0					
	4.8	-	6.4	3.3	3.4	HSD(F) 44S	3.1	3.3	11.7	9.5	6.2	6.6	1.1	2.0
	6.4	-	8.0			HSD(F) 45S			13.4	11.2				
	8.0	-	9.6			HSD(F) 46S			14.9	12.7				
	9.6	-	12.8			HSD(F) 48S			18.1	15.9				
Ø 4.0	1.6	-	3.2		HSD(F) 52S			9.9	7.0					
	3.2	-	4.8		HSD(F) 53S			11.5	8.6					
	4.8	-	6.4	4.1	4.3	HSD(F) 54S	3.9	4.1	13.1	10.2	7.8	8.2	1.4	2.5
	6.4	-	9.6			HSD(F) 56S			16.2	13.3				
	9.6	-	12.8			HSD(F) 58S			19.4	16.5				
Ø 4.8	2.3	-	3.2		HSD(F) 62S			10.7	7.6					
	3.2	-	4.8		HSD(F) 63S			12.3	9.2					
	4.8	-	6.4	4.9	5.2	HSD(F) 64S	4.7	4.9	13.9	10.8	9.3	9.9	1.6	3.1
	6.4	-	9.6			HSD(F) 66S			17.1	14.0				
	9.6	-	12.8			HSD(F) 68S			20.3	17.2				
	12.8	-	16.0			HSD(F) 610S			23.4	20.3				

DIMENSION IN MILLIMETERS

COUNTERSUNK HEAD IS AVAILABLE ON REQUEST

COUNTERSUNK PART NAME : HSF ○○S

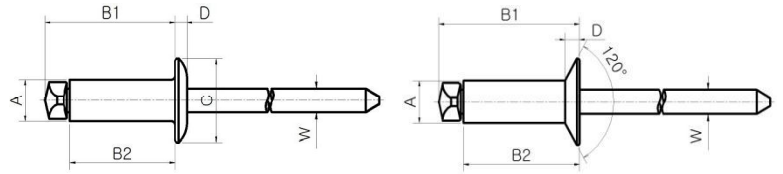
PERFORMANCE DATA

		TYPICAL VALUE		
TENSION	SHEAR	FASTENER SIZE (Ø)	TENSION (N)	SHEAR (N)
		3.2	2160	1370
		4.0	2940	2060
		4.8	4600	2350



OPENVET

DOMED HEAD, STAINLESS STEEL



MATERIAL

BODY : STAINLESS STEEL

MANDREL : STAINLESS STEEL

FINISH

BODY : POLISHED

MANDREL : NATURAL

DIMENSION DATA

FASTENER SIZE	GRIP RANGE		HOLE SIZE		PART NAME	DIMENSION							
	MIN	MAX	MIN	MAX		A MIN	A MAX	B1 MAX	B2 MAX	C MIN	C MAX	D ±0.2	W MAX
Ø 3.2	1.6	- 3.2			HSSD(F) 42SS			9.6	6.4				
	3.2	- 4.8			HSSD(F) 43SS			11.2	8.0				
	4.8	- 6.4	3.3	3.4	HSSD(F) 44SS	3.1	3.3	12.7	9.5	6.2	6.6	1.3	2.1
	6.4	- 8.0			HSSD(F) 45SS			14.4	11.2				
	8.0	- 9.6			HSSD(F) 46SS			15.9	12.7				
	9.6	- 12.8			HSSD(F) 48SS			19.1	15.9				
Ø 4.0	1.6	- 3.2			HSSD(F) 52SS			10.7	7.0				
	3.2	- 4.8			HSSD(F) 53SS			12.3	8.6				
	4.8	- 6.4	4.1	4.3	HSSD(F) 54SS	3.9	4.1	13.9	10.2	7.8	8.2	1.4	2.5
	6.4	- 9.6			HSSD(F) 56SS			17.0	13.3				
	9.6	- 12.8			HSSD(F) 58SS			20.2	16.5				
Ø 4.8	2.3	- 3.2			HSSD(F) 62SS			11.8	7.6				
	3.2	- 4.8			HSSD(F) 63SS			13.4	9.2				
	4.8	- 6.4	4.9	5.2	HSSD(F) 64SS	4.7	4.9	15.0	10.8	9.3	9.9	1.6	3.1
	6.4	- 9.6			HSSD(F) 66SS			18.2	14.0				
	9.6	- 12.8			HSSD(F) 68SS			21.4	17.2				
	12.8	- 16.0			HSSD(F) 610SS			24.5	20.3				

DIMENSION IN MILLIMETERS

COUNTERSUNK HEAD IS AVAILABLE ON REQUEST

COUNTERSUNK PART NAME : HSSF ○○SS

PERFORMANCE DATA

				TYPICAL VALUE	
TENSION	SHEAR	FASTENER SIZE (Ø)	TENSION (N)	SHEAR (N)	
		3.2	2350	2060	
		4.0	4410	3040	
		4.8	5600	3730	



MULTIVET

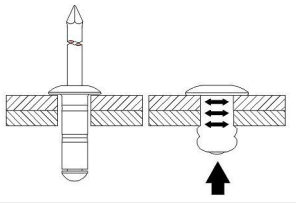
MULTI GRIP BLIND RIVET

Specification		
Size(Dia)	3.2, 4.0, 4.8	mm
Material	Aluminum, Steel, Stainless Steel	
Head types	Dome and Countersunk	
Finish	Aluminum & Stainless Steel	Natural and Black Color
	Steel	Zinc Plated



Features and Benefit

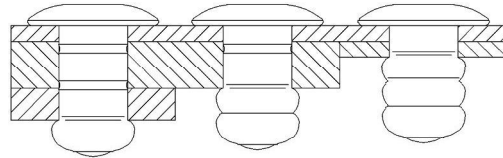
HOLE FILL FASTENING



During installation, Multivet offer good hole fill.
Provide strong vibration resistance joint.

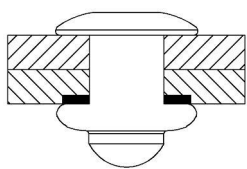
At the very soft material you need to discuss about the grip-range with us, as the good hole fill make often hole dia enlarge and the available thickness thinner.

MULTI_GRIP FASTENING



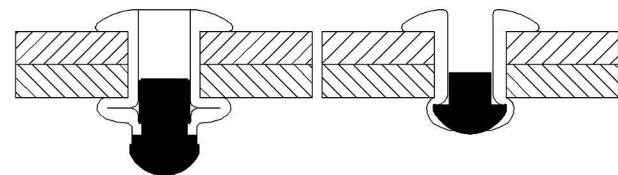
One multivet can be used instead of several standard grip rivets.
Reduce your labour cost and stock storage.

THIN MATERIAL FASTENING



Our Multivet offer a large bearing area on the rear sheet.
even you use very thin sheet at the rear siad, our multivet will offer a well-grip
The large bearing area will offer high resistance to pull-out load on the host material

WELL GRIP FASTENING



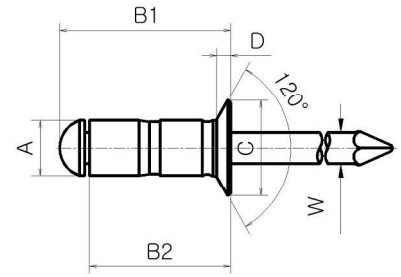
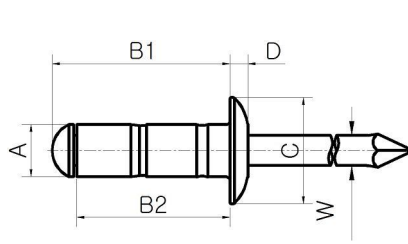
Our Multivet offers a well fastening and high resistance against vibration

After installation, the eyeball is well griped in the rivet body.
It will prevent DAMAGE, ELECTRIC PROBLEMS OR RATTLING due to losen eye-ball



MULTIVET

DOMED HEAD, COUNTERSUNK HEAD, ALUMINUM ALLOY



MATERIAL

BODY : A1100 / MANDREL : Steel

FINISH

BODY : Polished / MANDREL : Zinc coated

Dimension Data

Fastener size	Grip range		Hole size		PART NAME	Dimension							
	MIN	MAX	MIN	MAX		A		B1	B2	C		D	W
						MAX	MAX	MAX	±0.3	MIN	MAX	MAX	MAX
Ø3.2	0.50	3.20			HD(F) 4006			8.2	6.0				
	1.00	4.80			HD(F) 4008			10.2	8.0	6.2	6.6	1.3	
	1.00	6.40	3.30	3.40	HD(F) 4011	3.10	3.30	13.2	11.0	(8.1)	(8.6)	(1.4)	1.75
	3.00	8.40			HD(F) 4013			15.2	13.0	5.2	5.8	1.1	
	3.00	11.30			HD(F) 4016			18.2	16.0				
Ø4.0	1.00	4.00			HD(F) 5008			10.9	8.0				
	1.00	7.00			HD(F) 5011			13.9	11.0	7.8	8.2	1.5	
	3.00	9.00	4.10	4.30	HD(F) 5013	3.90	4.10	15.9	13.0	(11.0)	(11.7)	(1.7)	2.23
	5.00	11.00			HD(F) 5016			18.9	16.0	6.1	6.7	1.3	
	5.00	14.00			HD(F) 5020			22.9	20.0				
Ø4.8	1.00	3.60			HD(F) 6008			11.1	8.0				
	1.00	6.40			HD(F) 6011			14.1	11.0	9.3	9.9	1.7	
	3.00	11.60	4.90	5.20	HD(F) 6016	4.70	4.90	19.1	16.0	(15.3)	(16.2)	(2.1)	2.7
	5.00	15.20			HD(F) 6020			23.1	20.0	8.3	8.9	1.6	
	6.00	17.00			HD(F) 6022			25.1	22.0				
	6.00	20.00			HD(F) 6025			28.1	25.0				

Dimension in millimeters

- ★ Countersunk Head Size is in the dark sell : **xx.x**
- ★ Large Head Size is in the brackets : (xx.x)

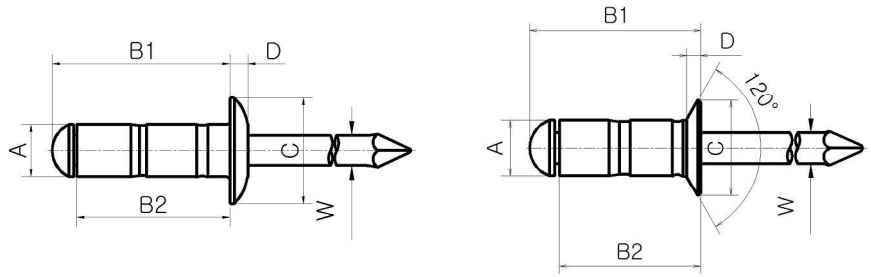
Performance Data - typical value

Tension	Shear	Fastener size	Tension (D/F)	Shear
		Ø3.2	740 N	490 N
		Ø4.0	1130 N	780 N
		Ø4.8	1570 N	1080 N



MULTIVET

DOMED HEAD, COUNTERSUNK HEAD, ALUMINUM ALLOY



MATERIAL

BODY : A5052 / MANDREL : Steel

FINISH

BODY : Polished / MANDREL : Zinc coated

Dimension Data

Fastener size	Grip range		Hole size		PART NAME	Dimension							
	MIN	MAX	MIN	MAX		A		B1	B2	C		D	W
						MAX	MAX	MAX	±0.3	MIN	MAX	MAX	MAX
Ø3.2	0.50	3.20			HD(F) 4506			8.2	6.0				
	1.00	4.80			HD(F) 4508			10.2	8.0	6.2	6.6	1.3	
	1.00	6.40	3.30	3.40	HD(F) 4511	3.10	3.30	13.2	11.0	(8.1)	(8.6)	(1.4)	1.90
	3.00	8.40			HD(F) 4513			15.2	13.0	5.2	5.8	1.1	
	3.00	11.30			HD(F) 4516			18.2	16.0				
Ø4.0	1.00	4.00			HD(F) 5508			10.9	8.0				
	1.00	7.00			HD(F) 5511			13.9	11.0	7.8	8.2	1.5	
	3.00	9.00	4.10	4.30	HD(F) 5513	3.90	4.10	15.9	13.0	(11.0)	(11.7)	(1.7)	2.3
	5.00	11.00			HD(F) 5516			18.9	16.0	6.1	6.7	1.3	
	5.00	14.00			HD(F) 5520			22.9	20.0				
Ø4.8	1.00	3.60			HD(F) 6508			11.1	8.0				
	1.00	6.40			HD(F) 6511			14.1	11.0	9.3	9.9	1.7	
	3.00	11.60	4.90	5.20	HD(F) 6516	4.70	4.90	19.1	16.0	(15.3)	(16.2)	(2.1)	2.9
	5.00	15.20			HD(F) 6520			23.1	20.0	8.3	8.9	1.6	
	6.00	17.00			HD(F) 6522			25.1	22.0				
	6.00	20.00			HD(F) 6525			28.1	25.0				

Dimension in millimeters

★ Large Head Size is in the brackets : (xx.x)

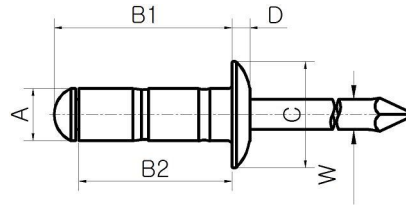
Performance Data - typical value

Tension	Shear	Fastener size	Tension (D/F)	Shear
		Ø3.2	780 N	540 N
		Ø4.0	1570 N	880 N
		Ø4.8	2160 N	1470 N



MULTIVET

DOMED HEAD, COUNTERSUNK HEAD, ALUMINUM ALLOY



MATERIAL

BODY : A5052 / MANDREL : Stainless Steel

FINISH

BODY : Polished / MANDREL : Zinc coated

Dimension Data

Fastener size	Grip range		Hole size		PART NAME	Dimension							
	MIN	MAX	MIN	MAX		A		B1	B2	C		D	W
						MAX	MAX	MAX	±0.3	MIN	MAX	MAX	MAX
Ø3.2	0.5	3.2			HD 4506E			8.2	6.0				
	1.0	4.8			HD 4508E			10.2	8.0	6.2	6.6	1.3	
	1.0	6.4	3.30	3.40	HD 4511E	3.10	3.30	13.2	11.0	(8.1)	(8.6)	(1.4)	1.9
	3.0	8.4			HD 4513E			15.2	13.0				
	3.0	11.3			HD 4516E			18.2	16.0				
Ø4.0	1.0	4.0			HD 5508E			10.9	8.0				
	1.0	7.0			HD 5511E			13.9	11.0	7.8	8.2	1.5	
	3.0	9.0	4.10	4.30	HD 5513E	3.90	4.10	15.9	13.0	(11.0)	(11.7)	(1.7)	2.3
	5.0	11.0			HD 5516E			18.9	16.0				
	5.0	14.0			HD 5520E			22.9	20.0				
Ø4.8	1.0	3.6			HD 6508E			11.1	8.0				
	1.0	6.4			HD 6511E			14.1	11.0	9.3	9.9	1.7	
	3.0	11.6	4.90	5.20	HD 6516E	4.70	4.90	19.1	16.0	(15.3)	(16.2)	(2.1)	2.9
	5.0	15.2			HD 6520E			23.1	20.0				
	6.0	17.0			HD 6522E			25.1	22.0				
	6.0	20.0			HD 6525E			28.1	25.0				

Dimension in millimeters

★ Large Head Size is in the brackets : (xx.x)

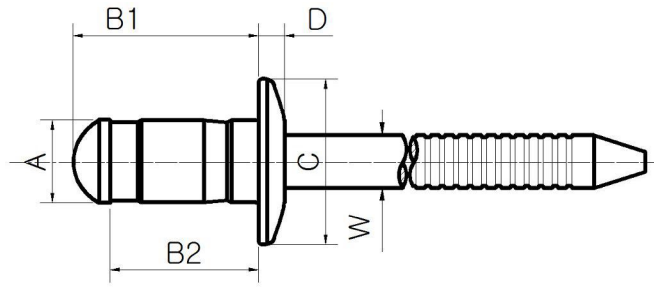
Performance Data - typical value

Tension	Shear	Fastener size	Tension (D/F)	Shear
		Ø3.2	780 N	540 N
		Ø4.0	1570 N	880 N
		Ø4.8	2160 N	1470 N



MULTIVET

DOMED HEAD, STEEL



MATERIAL

BODY : Steel / MANDREL : Steel

FINISH

BODY : Zinc plated / MANDREL : Zinc plated

Dimension Data

Fastener size	Grip range		Hole size		PART NAME	Dimension							
	MIN	MAX	MIN	MAX		A		B1	B2	C		D	W
						MIN	MAX	MAX	±0.5	MIN	MAX	±0.2	MAX
Ø3.2	1.0	3.0			HSD 4063V			9.0	6.7				
	3.0	4.5	3.3	3.4	HSD 4089V	3.10	3.30	11.6	9.3	6.1	6.7	1.3	2.2
	5.0	7.0			HSD 4112V			13.9	11.6				
Ø4.0	1.0	3.0			HSD 5076V			10.4	8.0				
	3.0	5.0	4.1	4.3	HSD 5096V	3.85	4.05	12.4	10.0	7.7	8.3	1.5	2.7
	5.0	7.0			HSD 5126V			15.4	13.0				
	7.0	9.0			HSD 5147V			17.3	14.7				
Ø4.8	1.5	3.5			HSD 6088V			12.0	9.1				
	3.5	6.0	4.9	5.1	HSD 6117V	4.70	4.90	15.2	12.3	9.3	9.9	1.6	3.1
	6.0	8.5			HSD 6147V			17.9	15.0				

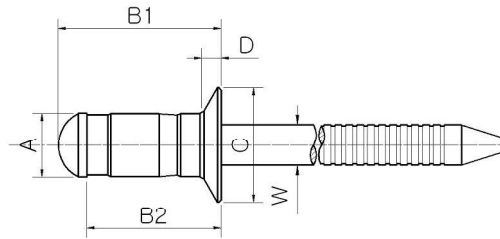
Dimension in millimeters

Performance Data – typical value

Tension	Shear	Fastener size	Tension	Shear
		Ø3.2	1300 N	1700 N
		Ø4.0	2800 N	3500 N
		Ø4.8	3800 N	4200 N



MULTIVET (Countersunk, Steel)



MATERIAL
BODY : Steel / MANDREL : Steel

FINISH
BODY : Zinc plated / MANDREL : Zinc plated

Dimension Data

Fastener size	Grip range		Hole size		PART NAME	Dimension							
	MIN	MAX	MIN	MAX		A		B1	B2	C		D	W
						MAX	MAX	MAX	MAX	MIN	MAX	±0.2	MAX
Ø3.2	2.0	3.0			HSF 4063V			9.0	6.7				
	3.0	5.0	3.3	3.4	HSF 4089V	3.10	3.30	11.6	9.3	6.1	6.7	1.3	2.2
	5.0	7.0			HSF 4112V			13.9	11.6				
Ø4.0	2.0	3.0			HSF 5076V			10.4	8.0				
	3.0	5.0	4.1	4.3	HSF 5096V	3.90	4.10	12.4	10.0	7.7	8.3	1.5	2.7
	5.0	7.0			HSF 5126V			15.4	13.0				
Ø4.8	2.5	3.5			HSF 6088V			12.0	9.1				
	3.5	6.0	4.9	5.1	HSF 6117V	4.70	4.90	15.2	12.3	9.3	9.9	1.6	3.1
	6.0	8.5			HSF 6147V			17.9	15.0				

Dimension in millimeters

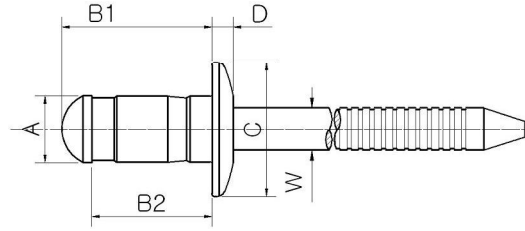
Performance Data - typical value

Tension	Shear	Fastener size	Tension	Shear
		Ø3.2	1300 N	1700 N
		Ø4.0	2800 N	3500 N
		Ø4.8	3800 N	4200 N



MULTIVET

DOMED HEAD, STAINLESS STEEL ALLOY



MATERIAL

FINISH

BODY : STAINLESS STEEL / MANDREL : STAINLESS STEEL

BODY : Natural / MANDREL : Natural

Dimension Data

Fastener size	Grip range		Hole size		PART NAME	Dimension							
	MIN	MAX	MIN	MAX		A		B1	B2	C		D	W
						MAX	MAX	MAX	MAX	MIN	MAX	±0.2	MAX
Ø3.2	1.0	3.0			HSSD 4070V			9.4	7.4				
	3.0	4.5	3.3	3.4	HSSD 4095V	3.1	3.3	11.9	9.9	6.1	6.7	1.3	2.2
	5.0	7.0			HSSD 4117V			14.1	12.1				
Ø4.0	1.0	3.0			HSSD 5076V			10.7	8.0				
	3.0	5.0	4.1	4.3	HSSD 5110V	3.9	4.1	13.1	10.4	7.7	8.3	1.5	2.7
	5.0	7.0			HSSD 5126V			15.7	13				
Ø4.8	1.5	3.5			HSSD 6103V			13.5	10.6				
	3.5	6.0	4.9	5.1	HSSD 6129V	4.7	4.9	16.1	13.2	9.3	9.9	1.6	3.1
	6.0	8.5			HSSD 6159V			19.1	16.2				

Dimension in millimeters

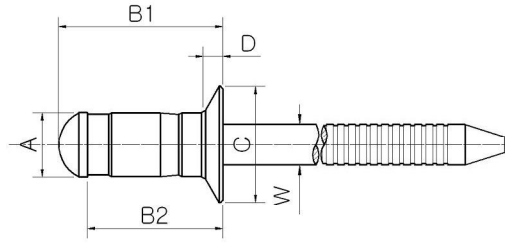
Performance Data – typical value

Tension	Shear	Fastener size	Tension	Shear
		Ø3.2	2000 N	1700 N
		Ø4.0	4000 N	5200 N
		Ø4.8	5000 N	5500 N



MULTIVET

COUNTERSUNK, STAINLESS STEEL ALLOY



MATERIAL

BODY : STAINLESS STEEL / MANDREL : STAINLESS STEEL

FINISH

BODY : Natural / MANDREL : Natural

Dimension Data

Fastener size	Grip range		Hole size		PART NAME	Dimension							
	MIN	MAX	MIN	MAX		A		B1	B2	C		D	W
						MAX	MAX	MAX	MAX	MIN	MAX	±0.2	MAX
Ø3.2	2.0	3.0			HSSF 4070V			9.4	7.4				
	3.0	5.0	3.3	3.4	HSSF 4095V	3.1	3.3	11.9	9.9	6.1	6.7	1.3	2.2
	5.0	7.0			HSSF 4117V			14.1	12.1				
Ø4.0	2.0	3.0			HSSF 5076V			10.7	8.0				
	3.0	5.0	4.1	4.3	HSSF 5110V	3.9	4.1	13.1	10.4	7.7	8.3	1.5	2.7
	5.0	7.0			HSSF 5126V			15.7	13				
Ø4.8	2.5	3.5			HSSF 6103V			13.5	10.6				
	3.5	6.0	4.9	5.1	HSSF 6129V	4.7	4.9	16.1	13.2	9.3	9.9	1.6	3.1
	6.0	8.5			HSSF 6159V			19.1	16.2				

Dimension in millimeters

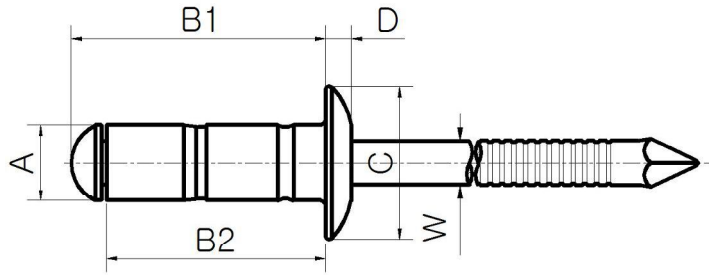
Performance Data - typical value

Tension	Shear	Fastener size	Tension	Shear
		Ø3.2	2000 N	1700 N
		Ø4.0	4000 N	5200 N
		Ø4.8	5000 N	5500 N



MULTIVET

DOOMED HEAD, ALUMINUM ALLOY



MATERIAL

BODY : A5052 / MANDREL : Steel

FINISH

BODY : Natural / MANDREL : Zinc plated

Dimension Data

Fastener size	Grip range		Hole size		PART NAME	Dimension							
	MIN	MAX	MIN	MAX		A		B1	B2	C		D	W
						MAX	MAX	MAX	MAX	MIN	MAX	±0.3	MAX
Ø6.4	1.0	3.5			HD 8510QSL			15.0	10.3	13.0	14.0		
	1.0	4.5			HD 8513Q			18.0	13.3				
	4.5	8.0	6.6	6.8	HD 8516Q	6.30	6.50	21.0	16.3			2.5	4.0
	8.0	14.0			HD 8520Q			25.0	20.3	12.4	13.2		
	14.0	17.5			HD 8525Q			30.0	25.3				

Dimension in millimeters

Performance Data - typical value

Tension	Shear	Fastener size	Tension	Shear
		Ø6.4	3400 N	2600 N



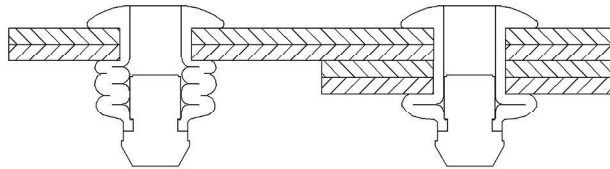
CLAMPVET

Specification		
Size(Dia)	3.2, 4.0, 4.8	mm
Material	Steel, Stainless Steel	
Head types	Dome and Countersunk	
Finish	Steel	Zinc Plated, Black colored
	Stainless Steel	Natural

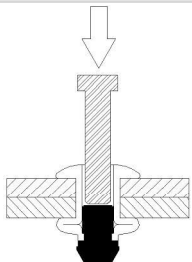


Features and Benefit

MULTI GRIP FASTENING



One Clampvet can be used instead of several standard grip rivets.
Reduce your labour cost and stock storage.



HIGH VIBRATION RESISTANCE OF THE EYEBALL

High resistance to push-out load of the eye-ball after installation.

GROOVED MANDREL



Offer a long tool life without vise jaws service.
Reduces labour cost.

HIGH SHEAR AND TENSILE STRENGTH

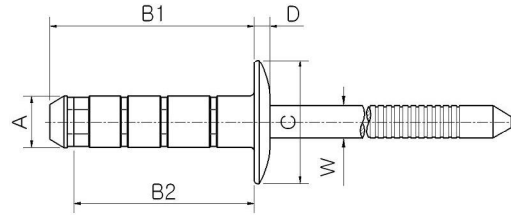
All steel option or all stainless option





CLAMPVET

DOOMED HEAD, STEEL



MATERIAL

BODY : Steel / MANDREL : Steel

FINISH

BODY : Zinc plated / MANDREL : Zinc plated

Dimension Data

Fastener size	Grip range		Hole size		PART NAME	Dimension							
	MIN	MAX	MIN	MAX		A		B1	B2	C		D	W
						MIN	MAX	MAX	MAX	MIN	MAX	MAX	MAX
Ø3.2	1.00	3.00	3.30	3.40	HMD 409S	3.10	3.30	11.4	9.4	6.2	6.6	1.4	2.2
	1.00	6.30			HMD 411S			14.0	12.0				
Ø4.0	1.00	4.00	4.10	4.30	HMD 510S			13.1	10.5				
	1.00	6.00			HMD 512S	3.90	4.10	15.1	12.5	7.7	8.2	1.6	2.7
	2.00	8.00			HMD 514S			17.1	14.5				
Ø4.8	1.50	5.10	4.90	5.20	HMD 610S			13.5	10.5				
	1.50	6.30			HMD 611S			15.0	12.0				
	1.50	9.50			HMD 615S	4.70	4.90	18.3	15.3	9.3	9.9	1.8	3.35
	6.40	12.70			HMD 618S	(4.60)	(4.80)	21.5	18.5	(15.8)	(16.5)	(2.1)	
	10.50	19.70			HMD 625S			28.5	25.5				

Dimension in millimeters

★ Large Head Size is in the brackets : (xx.x)

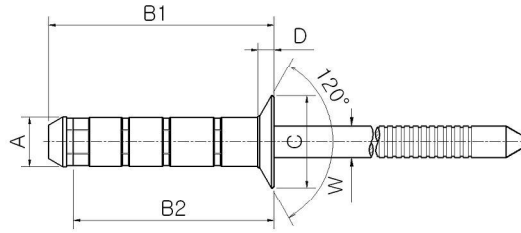
Performance Data – typical value

PUSH-OUT	Tension	Shear	Fastener size	Push-Out	Tension	Shear
			Ø3.2	490 N	1400 N	1000 N
			Ø4.0	780 N	2000 N	1500 N
			Ø4.8	980 N	2900 N	2700 N



CLAMPVET

COUNTERSUNK, STEEL



MATERIAL

BODY : Steel / MANDREL : Steel

FINISH

BODY : Zinc plated / MANDREL : Zinc plated

Dimension Data

Fastener size	Grip range		Hole size		PART NAME	Dimension							
	MIN	MAX	MIN	MAX		A		B1	B2	C		D	W
						MIN	MAX	MAX	MAX	MIN	MAX	MAX	MAX
Ø3.2	1.00	3.00	3.30	3.40	HMF 409S	3.10	3.30	11.4	9.4	6.2	6.6	1.4	2.2
	1.00	6.30			HMF 411S			14.0	12.0				
Ø4.0	1.00	4.00			HMF 510S			13.1	10.5				
	1.00	6.00	4.10	4.30	HMF 512S	3.90	4.10	15.1	12.5	7.7	8.2	1.6	2.7
	2.00	8.00			HMF 514S			17.1	14.5				
Ø4.8	1.50	5.10			HMF 610S			13.5	10.5				
	1.50	6.30	4.90	5.20	HMF 611S	4.70	4.90	15.0	12.0	9.3	9.9	1.8	3.35
	1.50	9.50			HMF 615S			18.3	15.3				
	6.40	12.70			HMF 618S			21.5	18.5				

Dimension in millimeters

★ Large Head Size is in the brackets : (xx.x)

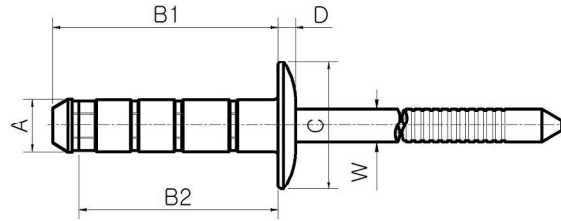
Performance Data – typical value

PUSH-OUT	Tension	Shear	Fastener size	Push-Out	Tension	Shear
			Ø3.2	490 N	1400 N	1000 N
			Ø4.0	780 N	2000 N	1500 N
			Ø4.8	980 N	2900 N	2700 N



CLAMPVET

DOOMED HEAD, STAINLESS STEEL



MATERIAL

BODY : Stainless Steel / MANDREL : Stainless Steel

FINISH

BODY : Natural / MANDREL : Natural

Dimension Data

Fastener size	Grip range		Hole size		PART NAME	Dimension							
	MIN	MAX	MIN	MAX		A		B1	B2	C		D	W
						MAX	MAX	MAX	MAX	MIN	MAX	MAX	MAX
Ø3.2	1.00	3.00	3.30	3.40	HMD 409SS	3.10	3.30	11.4	9.4	6.2	6.6	1.4	2.2
	1.00	6.30			HMD 411SS			14.0	12.0				
Ø4.0	1.00	4.00	4.10	4.30	HMD 510SS			13.1	10.5	7.7	8.2	1.6	2.7
	1.00	6.00			HMD 512SS	3.90	4.10	15.1	12.5				
	2.00	8.00			HMD 514SS			17.1	14.5				
Ø4.8	1.50	5.10	4.90	5.20	HMD 610SS			13.5	10.5	9.3	9.9	1.8	3.35
	1.50	6.30			HMD 611SS	4.70	4.90	15.0	12.0				
	1.50	9.50			HMD 615SS			18.3	15.3				
	6.40	12.70			HMD 618SS			21.5	18.5				

Dimension in millimeters

★ Large Head Size is in the brackets : (xx.x)

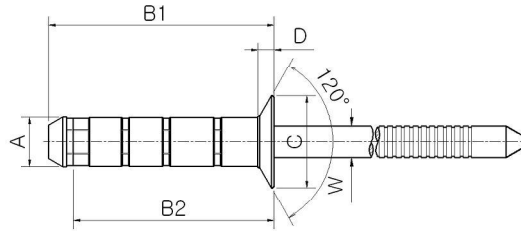
Performance Data - typical value

PUSH-OUT	Tension	Shear	Fastener size	Push-Out	Tension	Shear
			Ø3.2	200 N	2100 N	1800 N
			Ø4.0	200 N	3300 N	2700 N
			Ø4.8	200 N	4200 N	3200 N



CLAMPVET

COUNTERSUNK, STAINLESS STEEL



MATERIAL

BODY : Stainless Steel / MANDREL : Stainless Steel

FINISH

BODY : Natural / MANDREL : Natural

Dimension Data

Fastener size	Grip range		Hole size		PART NAME	Dimension							
	MIN	MAX	MIN	MAX		A		B1	B2	C		D	W
						MAX	MAX	MAX	MAX	MIN	MAX	MAX	MAX
Ø3.2	1.00	3.00	3.30	3.40	HMF409SS	3.10	3.30	11.4	9.4	6.2	6.6	1.4	2.2
	1.00	6.30			HMF411SS			14.0	12.0				
Ø4.0	1.00	4.00	4.10	4.30	HMF510SS			13.1	10.5	7.7	8.2	1.6	2.7
	1.00	6.00			HMF512SS	3.90	4.10	15.1	12.5				
	2.00	8.00			HMF514SS			17.1	14.5				
Ø4.8	1.50	5.10	4.90	5.20	HMF 610SS			13.5	10.5	9.3	9.9	1.8	3.35
	1.50	6.30			HMF 611SS	4.70	4.90	15.0	12.0				
	1.50	9.50			HMF 615SS			18.3	15.3				
	6.40	12.70			HMF 618SS			21.5	18.5				

Dimension in millimeters

★ Large Head Size is in the brackets : (xx.x)

Performance Data - typical value

PUSH-OUT	Tension	Shear	Fastener size	Push-Out	Tension	Shear
			Ø3.2	200 N	2100 N	1800 N
			Ø4.0	200 N	3300 N	2700 N
			Ø4.8	200 N	4200 N	3200 N



TRIVET

Specification		
Size(Dia)	4.0, 4.8	mm
Material	Aluminum	
Head types	Dome	
Finish	Natural & Anodized Black	



Features and Benefit

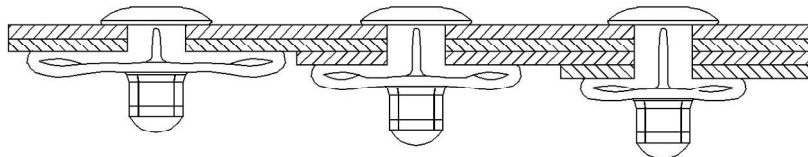
TRI LEGGED TAIL FORMATION

It spreads the tail bearing load / clamp load on the rear sheet.

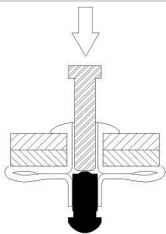
GOOD FOR THIN SHEET OR RESIN SHEET

The three legged tail formation is ideal for thin sheet or resin sheet fastening.

MULTI-GRIP FASTENING



Available for wide thickness.
Reduce your labour cost and stock storage.



HIGH VIBRATION RESISTANCE OF THE EYEBALL

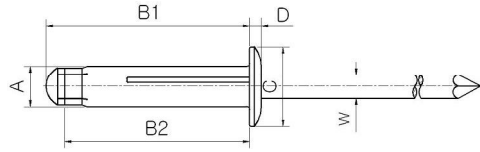
High resistance to push-out load of the eye-ball after installation.





TRIVET

DOMED HEAD, ALUMINUM ALLOY



MATERIAL
BODY : A5052 / MANDREL : Aluminum

FINISH
BODY : Natural / MANDREL : Natural

Dimension Data

Fastener size	Grip range		Hole size		PART NAME	Dimension							
	MIN	MAX	MIN	MAX		A		B1	B2	C		D	W
						MIN	MAX	MAX	MAX	MIN	MAX	MAX	-
Ø4.0	0.5	3.0			TAD 5052			17.0	12.7				
	0.5	6.4			TAD 5054			22.0	18.0				
	0.5	7.4			TAD 5054LC			22.1	18.0				
	5.6	9.6	4.2	4.5	TAD 5056	3.9	4.2	25.6	21.6	7.6	8.4	1.5	2.4
	8.8	12.8			TAD 5058			29.2	25.2				
Ø4.8	0.5	4.0			TAD 6063			20.3	15.8				
	0.5	6.4			TAD 6064			22.7	18.4				
	4.6	8.6			TAD 6065			24.6	20.5				
	5.6	9.6	5.0	5.3	TAD 6066	4.7	5.0	26.2	21.2	9.2	10.2	1.7	2.9
	8.8	12.8			TAD 6068			29.1	25.0				
	10.4	14.4			TAD 6069			32.6	28.5				

Dimension in millimeters

Large Head & Black Head Type is available on request.

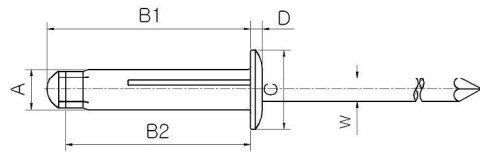
Performance Data – typical value

PUSH-OUT	Tension	Shear	Fastener size	Push-Out	Tension	Shear
			Ø4.0	190 N	1000 N	800 N
			Ø4.8	190 N	1450 N	1100 N



TRIVET

DOMED HEAD, ALUMINUM ALLOY



MATERIAL
BODY : A5154 / MANDREL : Aluminum

FINISH
BODY : Natural / MANDREL : Natural

Dimension Data

Fastener size	Grip range		Hole size		PART NAME	Dimension							
	MIN	MAX	MIN	MAX		A		B1	B2	C		D	W
						MIN	MAX	MAX	MAX	MIN	MAX	MAX	-
Ø3.2	0.5	6.4	3.3	3.4	TAD 4144	3.15	3.3	19.5	17.2	6.2	6.4	1.0	1.95
	0.5	3.0			TAD 5152			17.0	12.7				
Ø4.0	0.5	6.4			TAD 5154			22.0	18.0				
	5.6	9.6	4.2	4.3	TAD 5156	3.9	4.2	25.6	21.6	7.6	8.4	1.5	2.4
	8.8	12.8			TAD 5158			29.2	25.2				
Ø4.8	0.5	4.0			TAD 6163			20.3	15.8				
	0.5	6.4			TAD 6164			22.7	18.4				
	4.6	8.6			TAD 6165			24.6	20.5				
	5.6	9.6	5.0	5.2	TAD 6166	4.7	5.0	26.2	21.2	9.2	10.2	1.9	2.9
	8.8	12.8			TAD 6168			29.1	25.0				
	10.4	14.4			TAD 6169			32.6	28.5				

Dimension in millimeters

Large Head & Black Head Type is available on request.

Performance Data – typical value

PUSH-OUT	Tension	Shear	Fastener size	Push-Out	Tension	Shear
			Ø3.2	100 N	900 N	550 N
			Ø4.0	190 N	1000 N	800 N
			Ø4.8	190 N	1450 N	1100 N





OUTVET

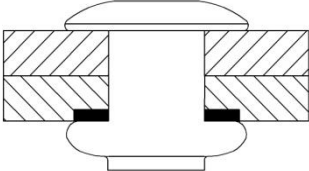
SPECIFICATION		
SIZE (mm)	3.2, 4.0, 4.8	
MATERIAL	STAINLESS STEEL BODY & STEEL MANDREL	
HEAD TYPES	DOME	
FINISH	TYPE	ROLLING TYPE, CLAMPING TYPE
	STEEL	ZINC PLATED
	STAINLESS STEEL	NATURAL


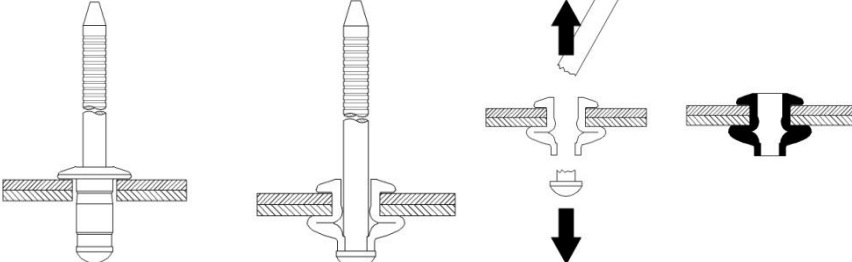


FATURES AND BENEFIT

<p>STAINLESS STEEL BODY</p> 	<p>STAINLESS STEEL BODY CAN PROVIDE HIGH CORROSION RESISTANCE</p>
-----------------------------------------------------------------------------------------------------------------------	-------------------------------------------------------------------

<p>NAIL HEAD EJECTION</p> 	<p>DUE TO EYE BALL(NAIL HEAD) EJECTION AFTER RIVETTING IT CAN PROTECT SOME POTENTIAL PROBLEMS (PHYSICAL, ELECTRICAL, NOISE, ETC) BY EYE BALL DROPPING DURING USING.</p>
----------------------------------------------------------------------------------------------------------------------	-------------------------------------------------------------------------------------------------------------------------------------------------------------------------

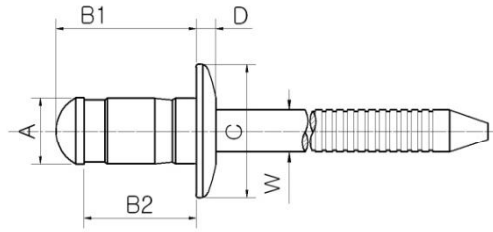
<p>THIN MATERIAL FASTENING</p> 	<p>OUR OUTVET OFFER A LARGE BEARING AREA ON THE REAR SHEET. EVEN YOU USE VERY THIN SHEET AT THE REAR SIDE, OUR OUTVET WILL OFFER A WELL-GRIP THE LARGE BEARING AREA WILL OFFER HIGH RESISTANCE TO PULL-OUT LOAD ON THE HOST MATERIAL. ONE OUT VET CAN BE USED INSTEAD OF SEVERAL STANDARD GRIP RIVETS. REDUCE YOUR LABOUR COST AND STOCK STORAGE.</p>
---------------------------------------------------------------------------------------------------------------------------	---------------------------------------------------------------------------------------------------------------------------------------------------------------------------------------------------------------------------------------------------------------------------------------------------------------------------------------------------------------

	
-------------------------------------------------------------------------------------	--------------------------------------------------------------------------------------



OUTVET

ROLLING TYPE, DOME HEAD, STAINLESS STEEL BODY, STEEL MANDREL



MATERIAL

BODY : SAINLESS MANDREL : STEEL

FINISH

BODY : NATURAL MANDREL : ZINC

DIMENSION DATA

FASTENER SIZE	GRIP RANGE		HOLE SIZE		PART NAME	DIMENSION							
	MIN	MAX	MIN	MAX		A MIN MAX	B1 MAX	B2 MAX	C MIN MAX	D ±0.2	W MAX		
Ø 3.2	1.0	3.0			HSSD 4070 SMO		9.4	7.4					
	3.0	4.5	3.3	3.4	HSSD 4095 SMO	3.1	3.3	11.9	9.9	6.1	6.7	1.3	2.2
	5.0	7.0			HSSD 4117 SMO			14.1	12.1				
Ø 4.0	1.0	3.0			HSSD 5076 SMO			10.7	8.0				
	3.0	5.0	4.1	4.3	HSSD 5110 SMO	3.9	4.1	13.1	10.4	7.7	8.3	1.5	2.7
	5.0	7.0			HSSD 5126 SMO			15.7	13.0				
Ø 4.8	1.5	3.5			HSSD 6103 SMO			13.5	10.6				
	3.5	6.0	4.9	5.1	HSSD 6129 SMO	4.7	4.9	16.1	13.2	9.3	9.9	1.6	3.10
	6.0	8.5			HSSD 6159 SMO			19.1	16.2				

DIMENSION IN MILIMETERS

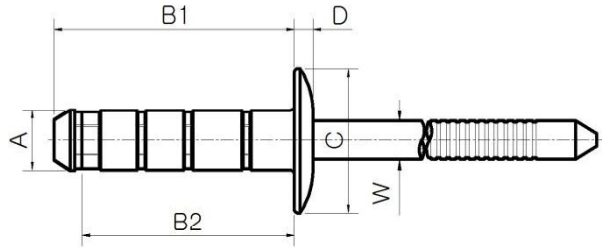
PERFORMANCE DATA

TENSION	SHEAR	FASTENER SIZE (Ø)	TAPICAL VALUE	
			TENSION (N)	SHEAR (N)
		3.2	2000	1700
		4.0	4000	5200
		4.8	5000	5500



OUTVET

CLAMPING TYPE, DOME HEAD, STAINLESS STEEL BODY, STEEL MANDREL



MATERIAL

BODY : SAINLESS MANDREL : STEEL

FINISH

BODY : NATURAL MANDREL : ZINC

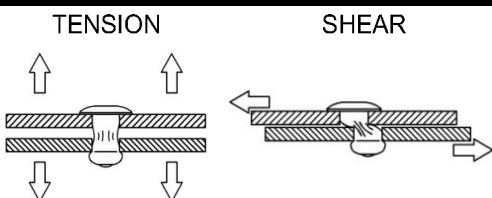
DIMENSION DATA

FASTENER SIZE	GRIP RANGE		HOLE SIZE		PART NAME	DIMENSION							
	MIN	MAX	MIN	MAX		A		B1	B2	C		D	W
						MIN	MAX	MAX	MAX	MIN	MAX	MAX	MAX
Ø 3.2	1.0	3.0	3.3	3.4	HMD 409 SMO	3.1	3.3	11.4	9.4	6.2	6.6	1.4	2.2
	1.0	6.3			HMD 411 SMO			14.0	12.0				
Ø 4.0	1.0	4.0	4.1	4.3	HMD 510 SMO			13.1	10.5	7.7	8.2	1.6	2.7
	1.0	6.0			HMD 512 SMO	3.9	4.1	15.1	12.5				
	2.0	8.0			HMD 514 SMO			17.1	14.5				
Ø 4.8	1.5	5.1	4.9	5.2	HMD 610 SMO			13.5	10.5	9.3	9.9	1.8	3.35
	1.5	6.3			HMD 611 SMO	4.7	4.9	15.0	12.0				
	1.5	9.5			HMD 615 SMO			18.3	15.3				
	6.4	12.7			HMD 618 SMO			21.5	18.5				

DIMENSION IN MILIMETERS

PERFORMANCE DATA

TAPICAL VALUE



FASTENER SIZE (Ø)	TENSION (N)	SHEAR (N)
3.2	2100	1800
4.0	3300	2700
4.8	4200	3200